

Governor's Health Equity Council

March 17, 2021

Today's Agenda

- Review Minutes and Approve
- The Story of Health Equity
 - Lt. Governor Mandela Barnes
 - DHS Interim Secretary Karen Timberlake
 - DCF Senior Manager Thomas McCarthy
 - Governor's Office, T.R. Williams
- DHS COVID Response Team Update
- Equity and Inclusion Council Update
- Council Homework Update
- Public comment

Chair Updates

- Welcome
- Minutes Approval
- Welcome Secretary Timberlake
- Council Updates
 - GHEC Structure
- Today's Meeting

The Story of Health Equity

- Lt. Governor Mandela Barnes
- DHS Interim Secretary Karen Timberlake
- DCF Senior Manager Thomas McCarthy
- Deputy Director of External Affairs , Office of Governor Evers, TR Williams

Opportunity: American Rescue Plan Act funding

- May provide opportunity to elevate concrete, ready-to-go ideas!
 - Language Access Program for health equity?
 - Funding for Youth lead community programs, communal social justice organizing workshops, Black radicalism, etc.
 - Funding for readily-accessible housing initiatives
 - Funding to communities who already have a resource allocation plan
- If have specific idea to share with the Governor's Office – **act now**
 - Gina happy to serve as connection point, please email

DHS COVID Response Team Update

Deputy Secretary Julie Willems Van Dijk

Equity and Inclusion Council Update

DOA/Bureau of Equity Inclusion, Laurice Lincoln

Council Homework Update

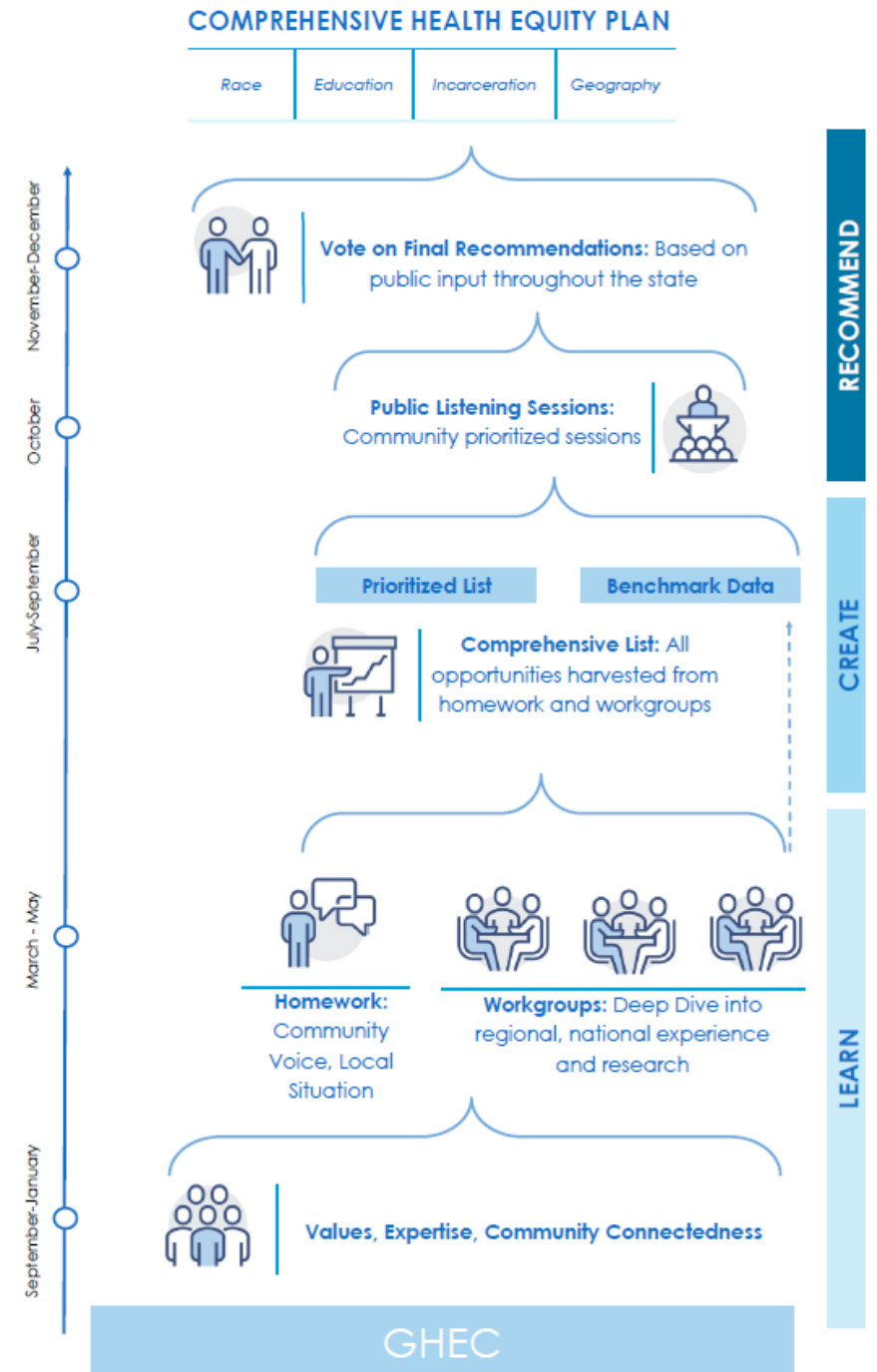
Response Overview

- 17 responses
- Sampling of communities represented:
 - Black youth, Red Cliff Reservation, Rural Tribal Community, Latinx, Children and families in WI, healthcare community-(urban and rural)
- Overall comments:
 - Respondents were consistent across the questions; focusing on one or a set of issues throughout the questions
 - Common emphasis on need for an equity lens in all efforts
- Overall strengths: Collaboration and Coalitions—GHEC's strongpoint

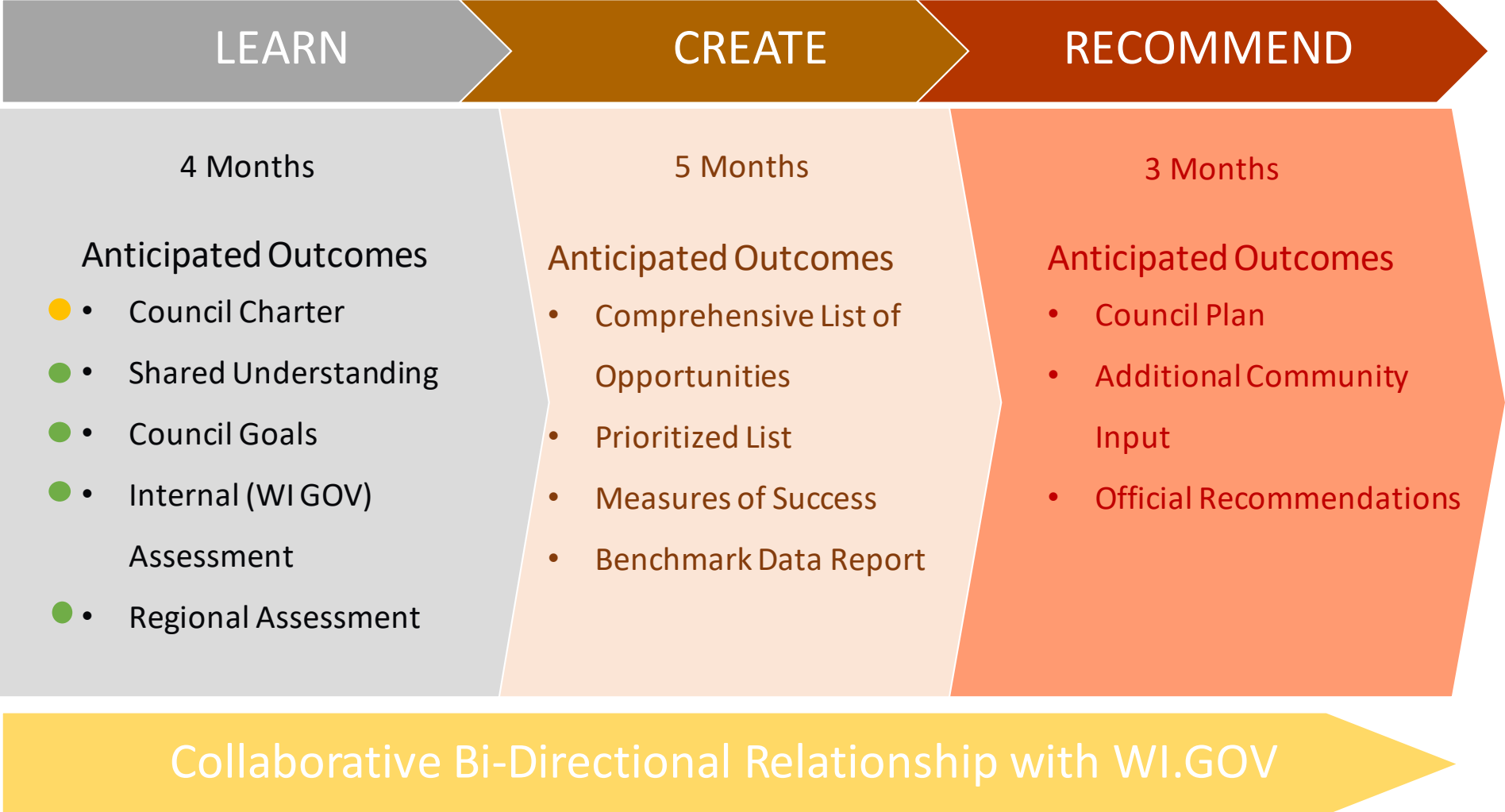
Takeaways

- Member input to drive GHEC priorities and recommendations.
- Homework is meant to be inclusive – lift up the voices of the communities you all represent!
- The survey will be open until **March 31**
 - these results will be used to help organize future GHEC work
- IF YOU NEED HELP COMPLETING THE SURVEY: contact GHEC staffer Ameerah Ahmad, Ameerah.ahmad@dhs.wisconsin.gov

Where We Are Headed



Process: 3 phases over 12 months



Public Comment