

COVID Response Presentation to Governor's Health Equity Council

March 17, 2021

March, 2020

Number of reported confirmed and probable COVID-19 cases by date of symptom onset or diagnosis: Wisconsin

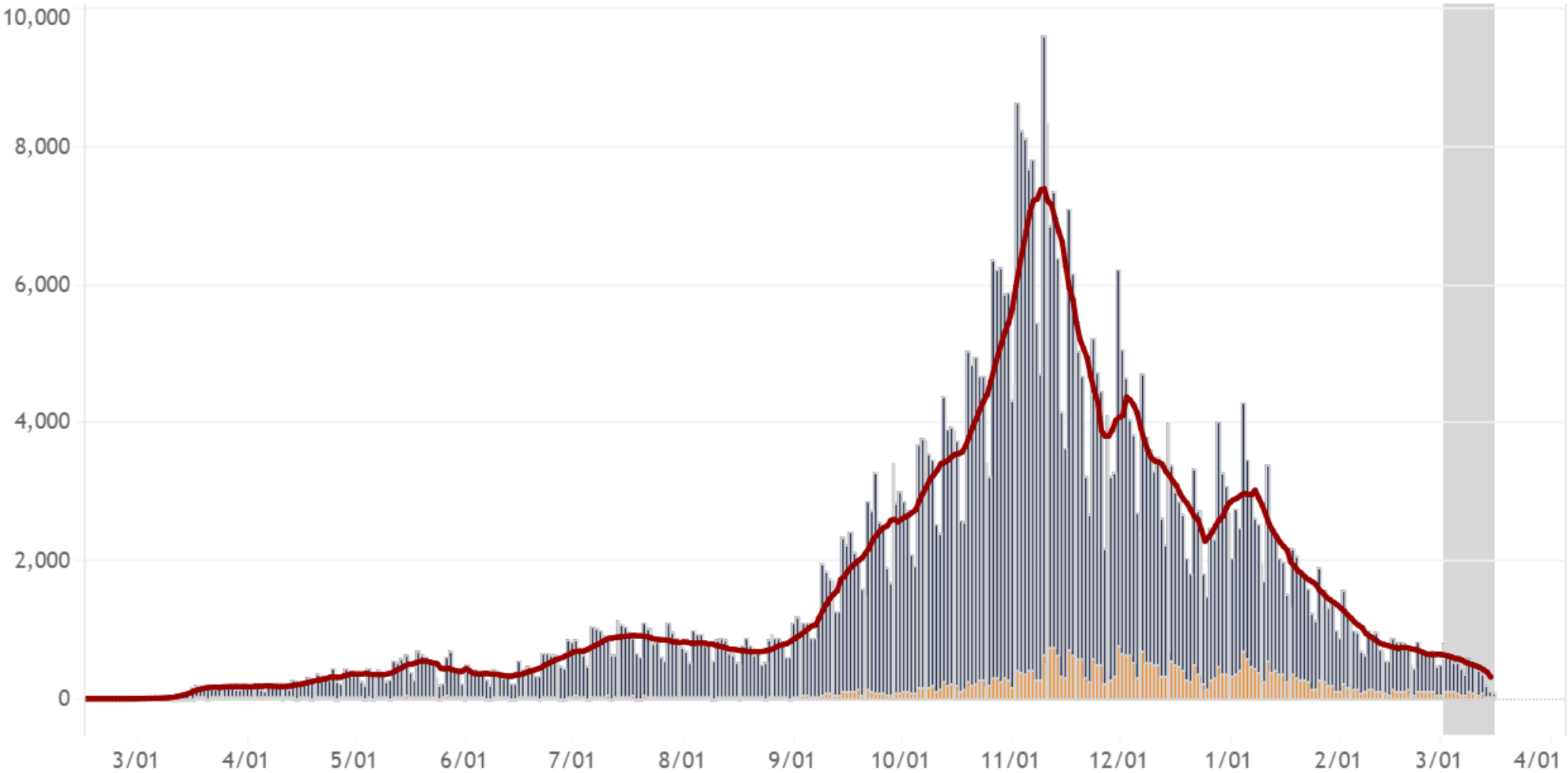
Updated: 3/16/2021 (Total: 626,364)

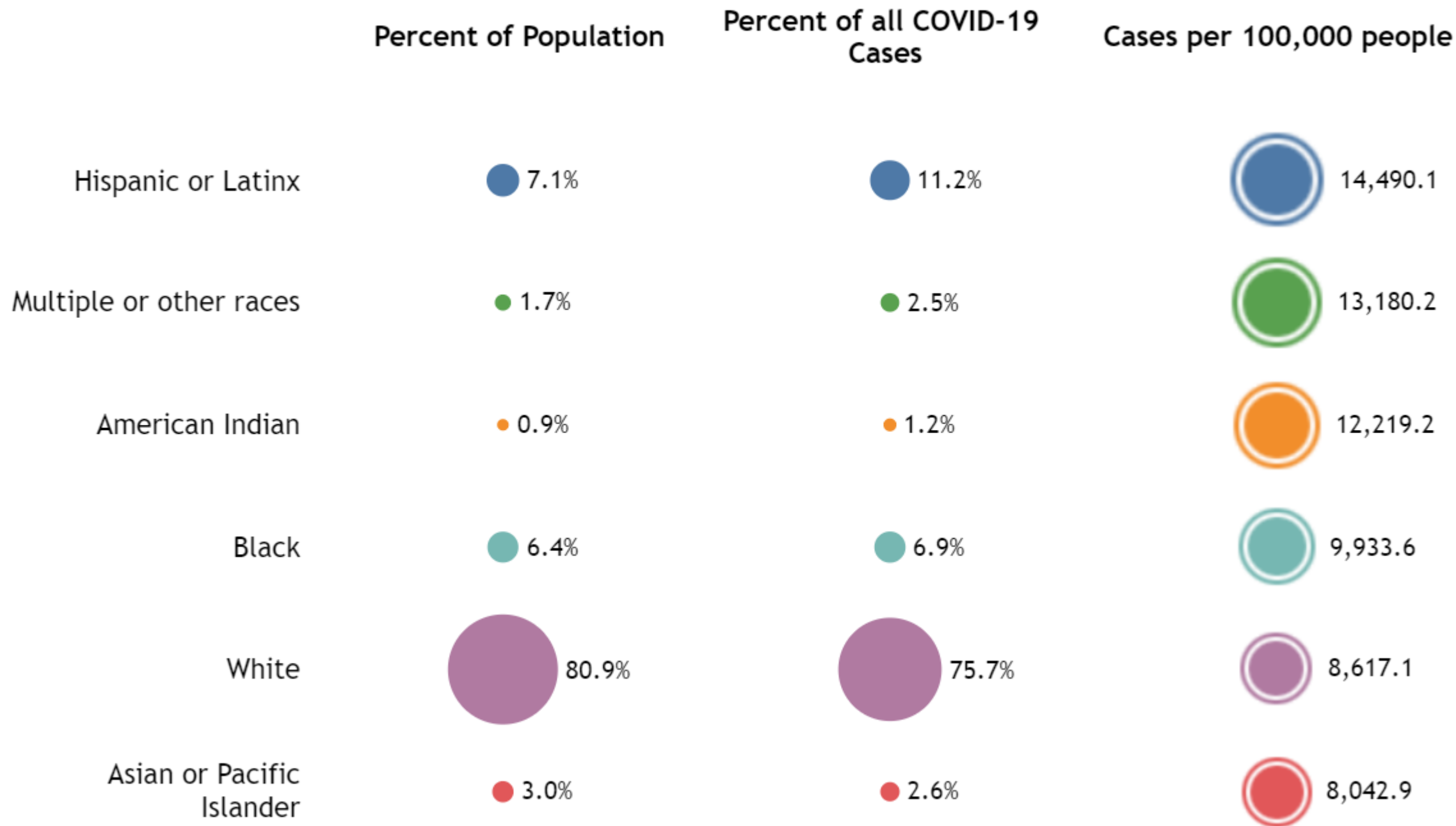
Preliminary Data

Select County:
Wisconsin ▼

Select Case Status:
 Confirmed
 Probable
 Confirmed and Probable

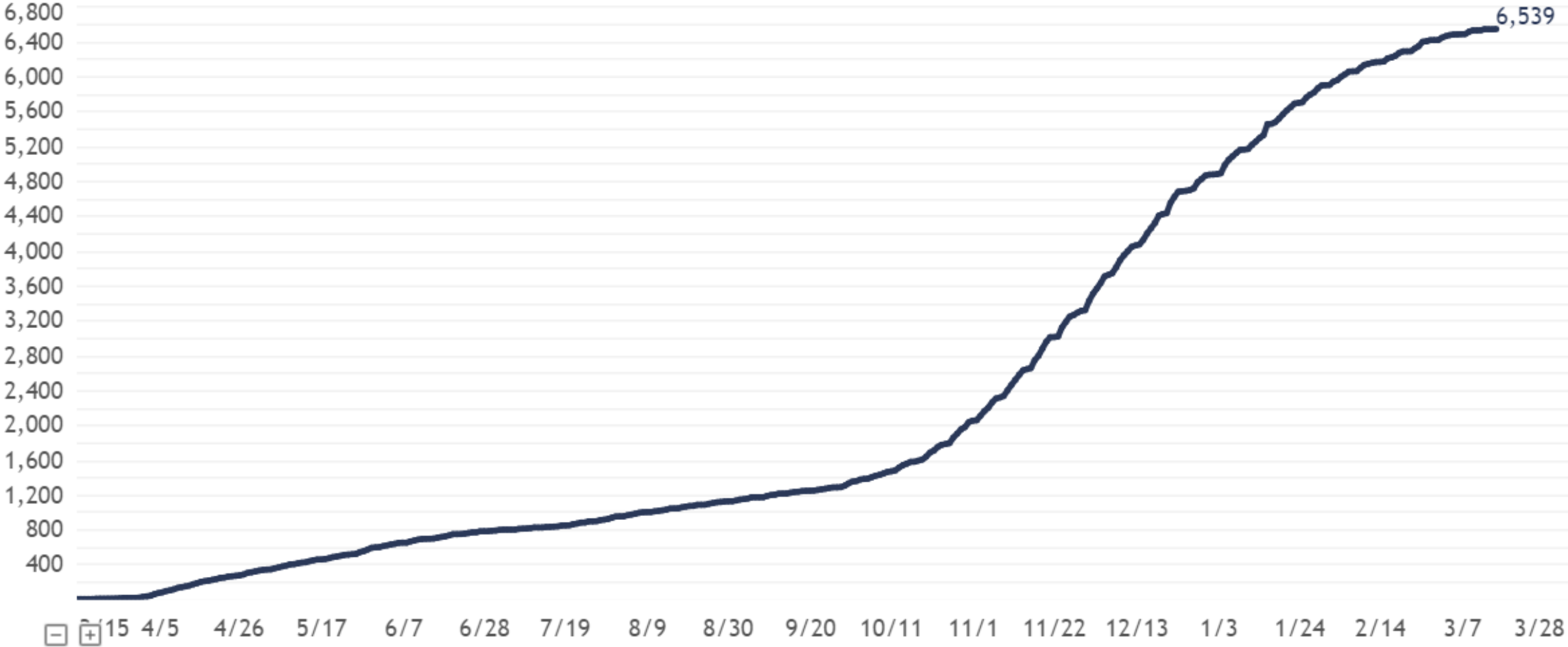
Confirmed cases
 Probable cases
 7-day average

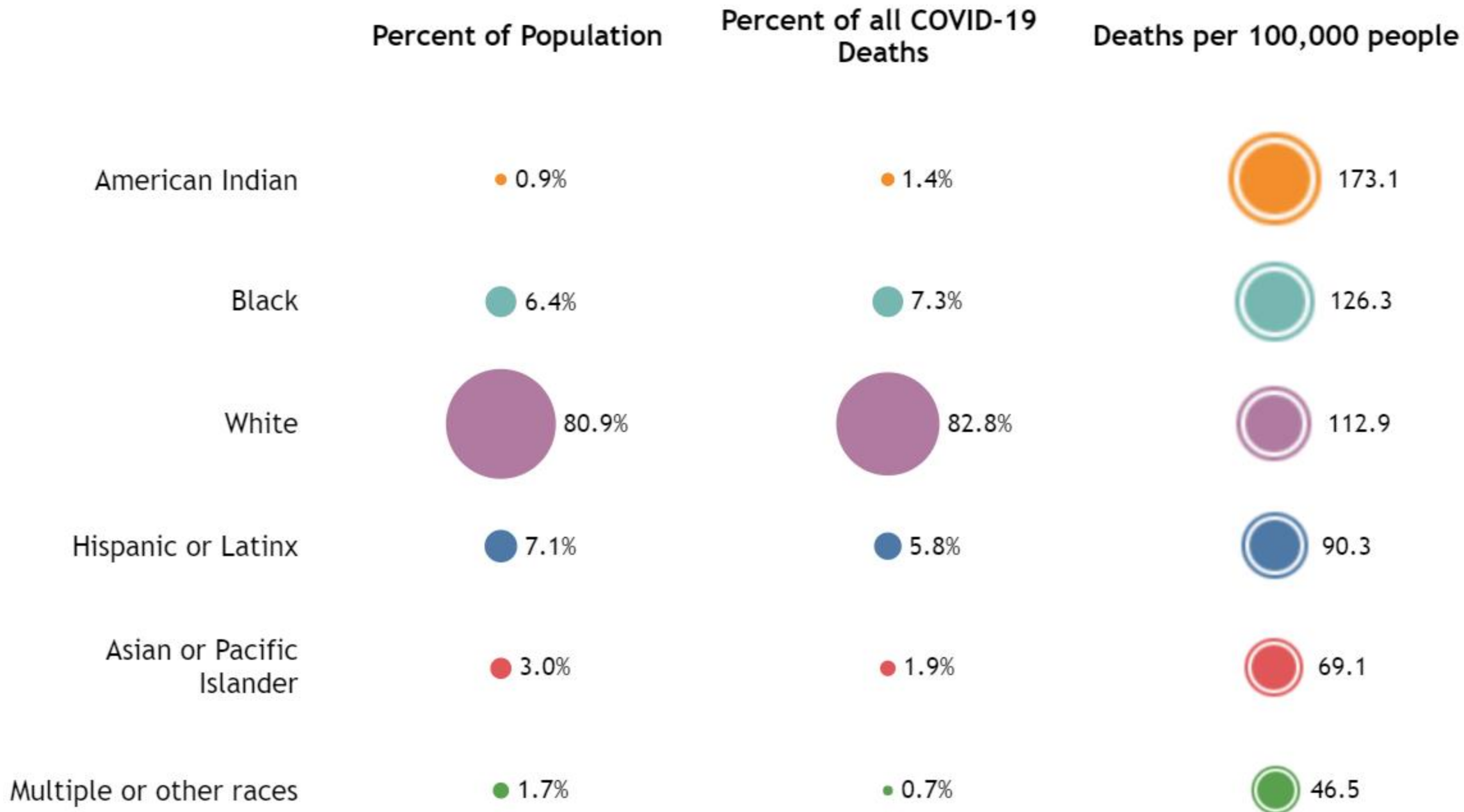




Cumulative total deaths among confirmed COVID-19 cases by date reported

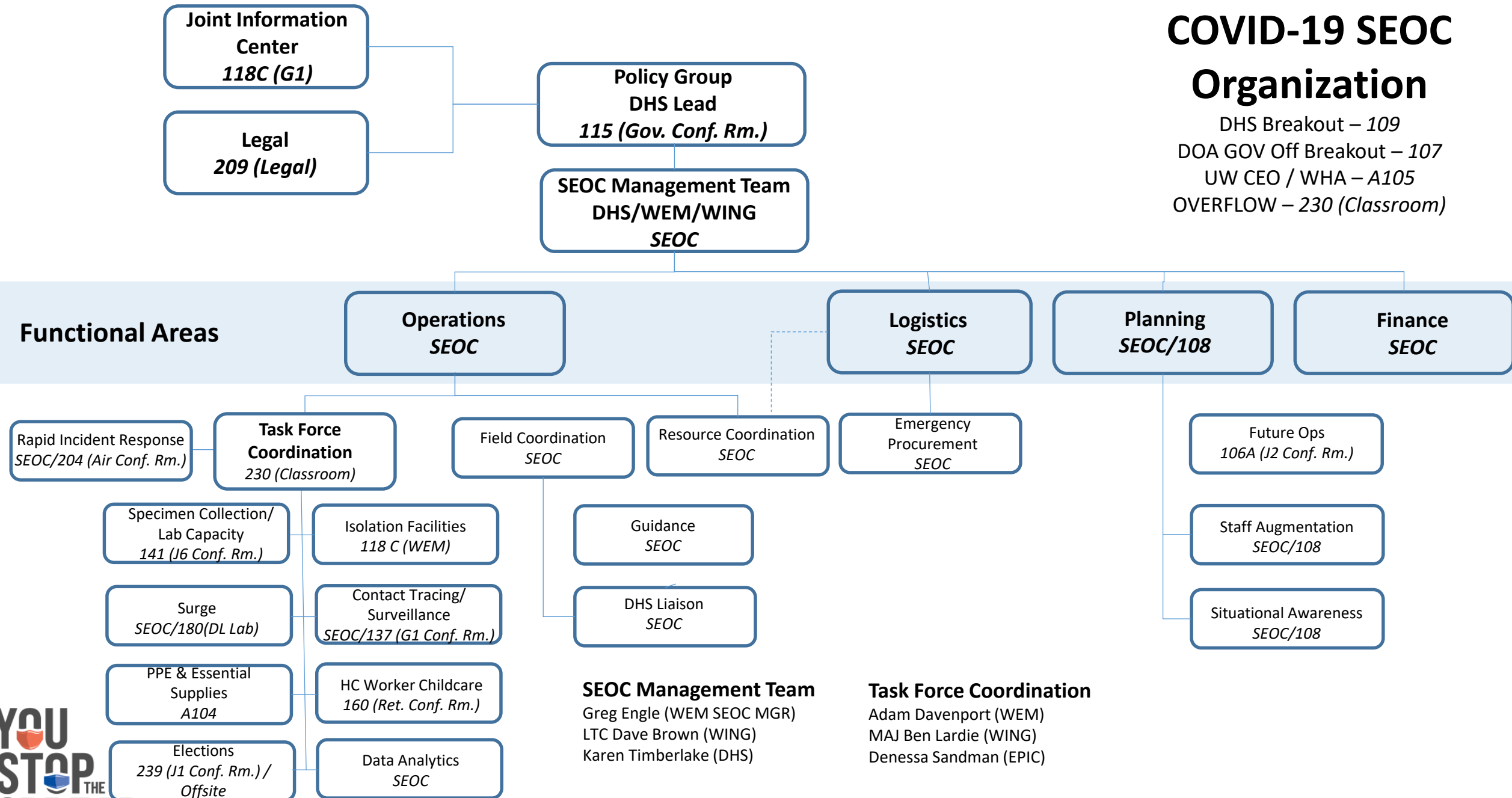
Updated: 3/16/2021





COVID-19 SEOC Organization

DHS Breakout – 109
 DOA GOV Off Breakout – 107
 UW CEO / WHA – A105
 OVERFLOW – 230 (Classroom)



Functional Areas

Rapid Incident Response
SEOC/204 (Air Conf. Rm.)

Task Force Coordination
230 (Classroom)

Field Coordination
SEOC

Resource Coordination
SEOC

Emergency Procurement
SEOC

Planning
SEOC/108

Finance
SEOC

Specimen Collection/
Lab Capacity
141 (J6 Conf. Rm.)

Isolation Facilities
118 C (WEM)

Surge
SEOC/180(DL Lab)

Contact Tracing/
Surveillance
SEOC/137 (G1 Conf. Rm.)

PPE & Essential
Supplies
A104

HC Worker Childcare
160 (Ret. Conf. Rm.)

Elections
239 (J1 Conf. Rm.) /
Offsite

Data Analytics
SEOC

Guidance
SEOC

DHS Liaison
SEOC

SEOC Management Team
 Greg Engle (WEM SEOC MGR)
 LTC Dave Brown (WING)
 Karen Timberlake (DHS)

Task Force Coordination
 Adam Davenport (WEM)
 MAJ Ben Lardie (WING)
 Denessa Sandman (EPIC)

Future Ops
106A (J2 Conf. Rm.)

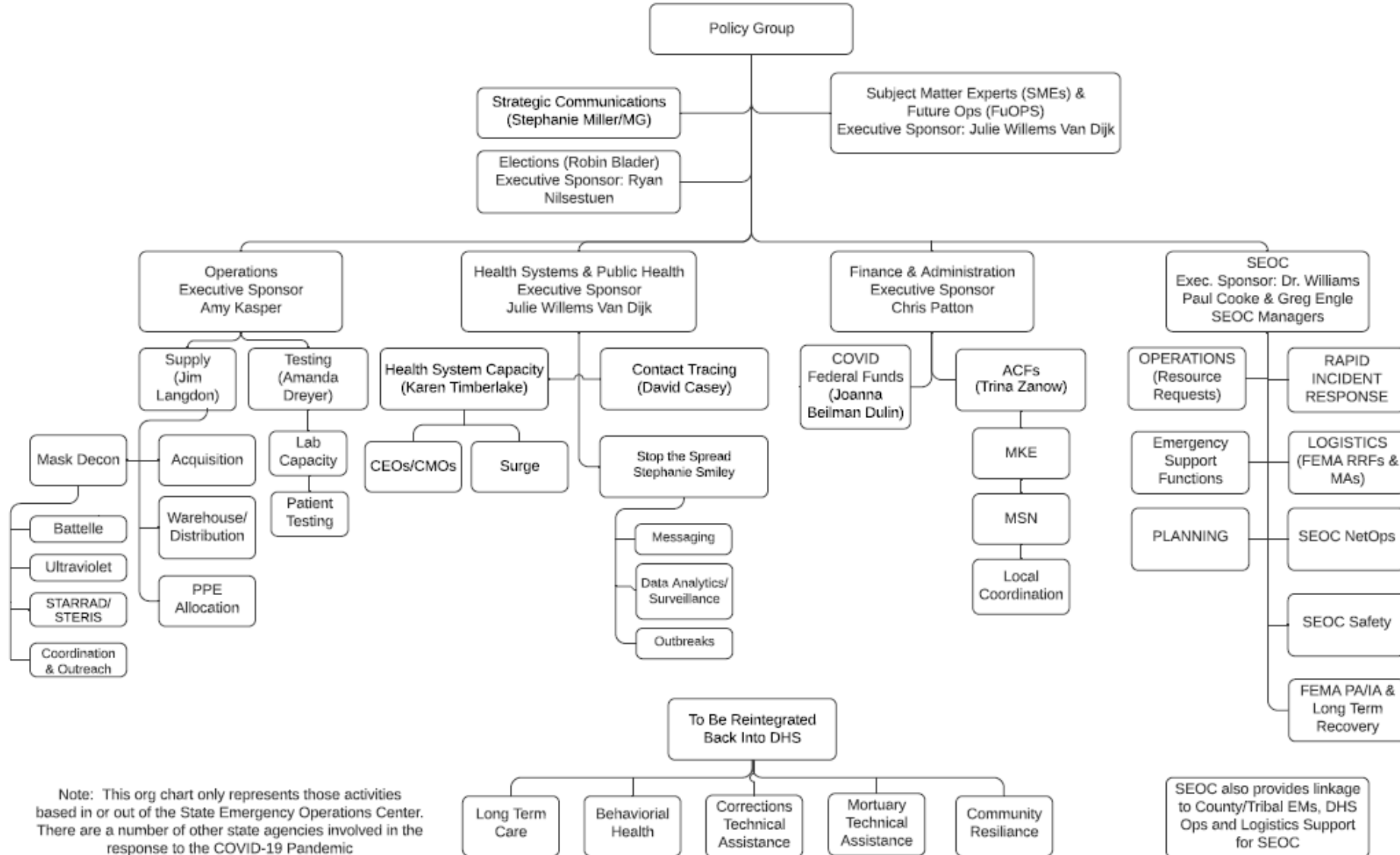
Staff Augmentation
SEOC/108

Situational Awareness
SEOC/108



WHOLE OF STATE GOVERNMENT RESPONSE - COVID-19

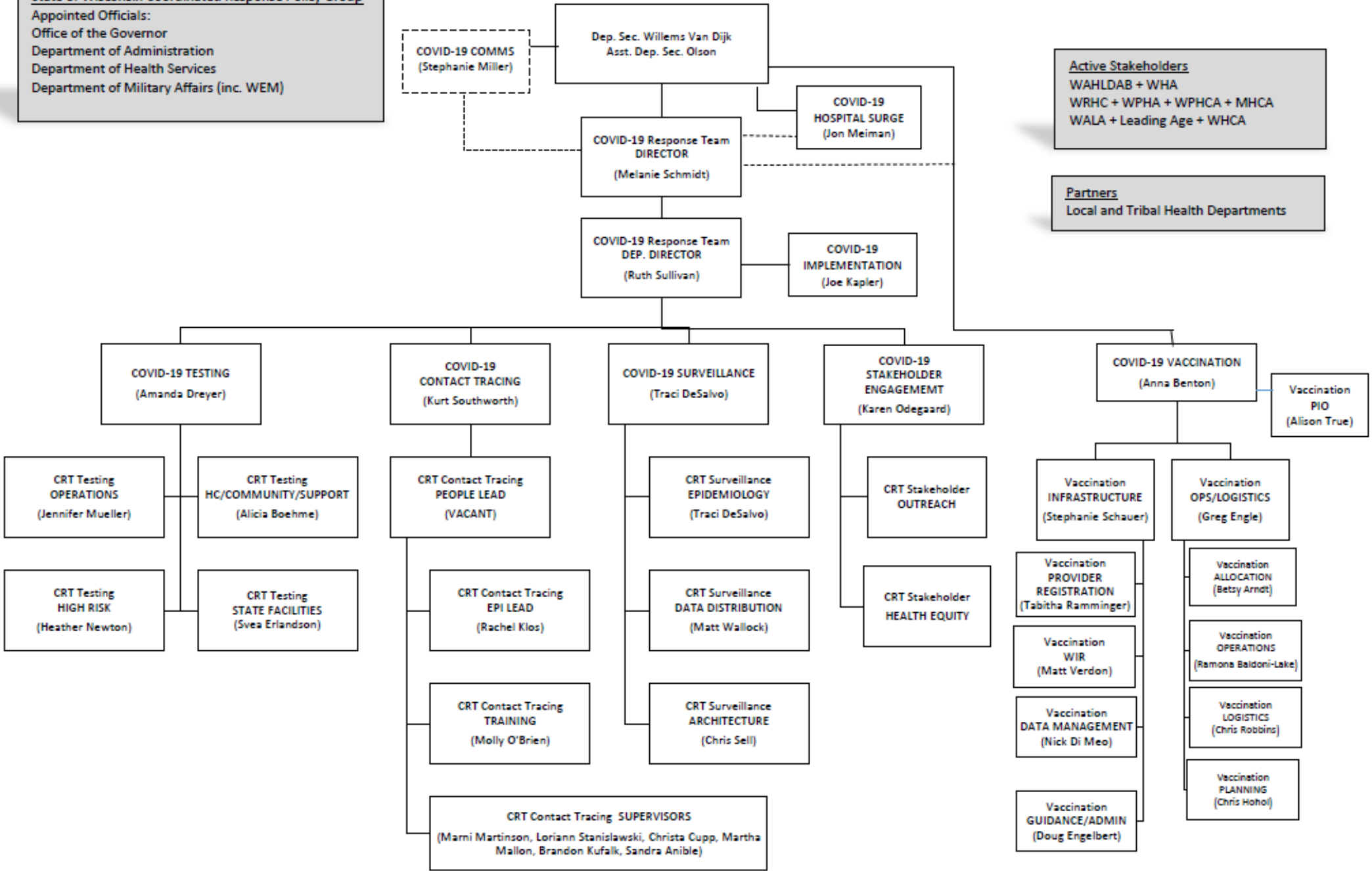
April 30, 2020



Note: This org chart only represents those activities based in or out of the State Emergency Operations Center. There are a number of other state agencies involved in the response to the COVID-19 Pandemic



State of Wisconsin Coordinated Response Policy Group
 Appointed Officials:
 Office of the Governor
 Department of Administration
 Department of Health Services
 Department of Military Affairs (inc. WEM)



Vaccine: State Role

- Eligibility
- Allocation & Distribution
- Resource Allocation
- Guidance & Technical Assistance
- Data & Systems

Goal: 80% coverage for all adults

- 2.0 million doses administered
 - 21.9% of Wisconsin's population has received their first dose (27.5% of adults)
 - 12.6% of Wisconsin's population has completed their series (15.5% of adults)
- 68.9% of people 65 or older (700,583) have received their first dose
 - 41.0 % (416,757) of people 65 or older have completed their series

	Category	% Coverage	Ratio White:Each R/E Group
Race	American Indian	14.7%	1.4:1
	Asian	10.2%	2.0:1
	Black	7.3%	2.7:1
	White	20.0%	N/A
Ethnicity	Hispanic	6.9%	3.0:1
	Non-Hispanic	20.6%	N/A

Eligibility

Phase 1A Dec-Feb

- Frontline Health Care Workers
- Long-term Care Residents
- Police, Fire, Correctional Staff
- People 65 years or older

Phase 1B March 1

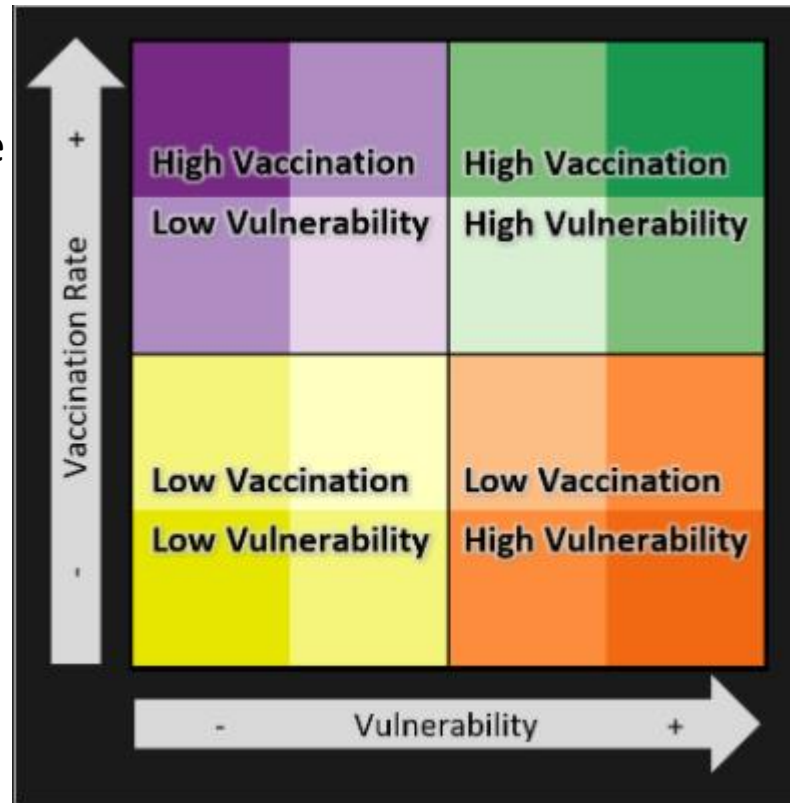
- Educators
- People on LTC Medicaid programs
- Public Facing Essential Workers (Food, Transit, Utilities, Non-frontline healthcare)
- Congregate Settings

Phase 1C March 22-April

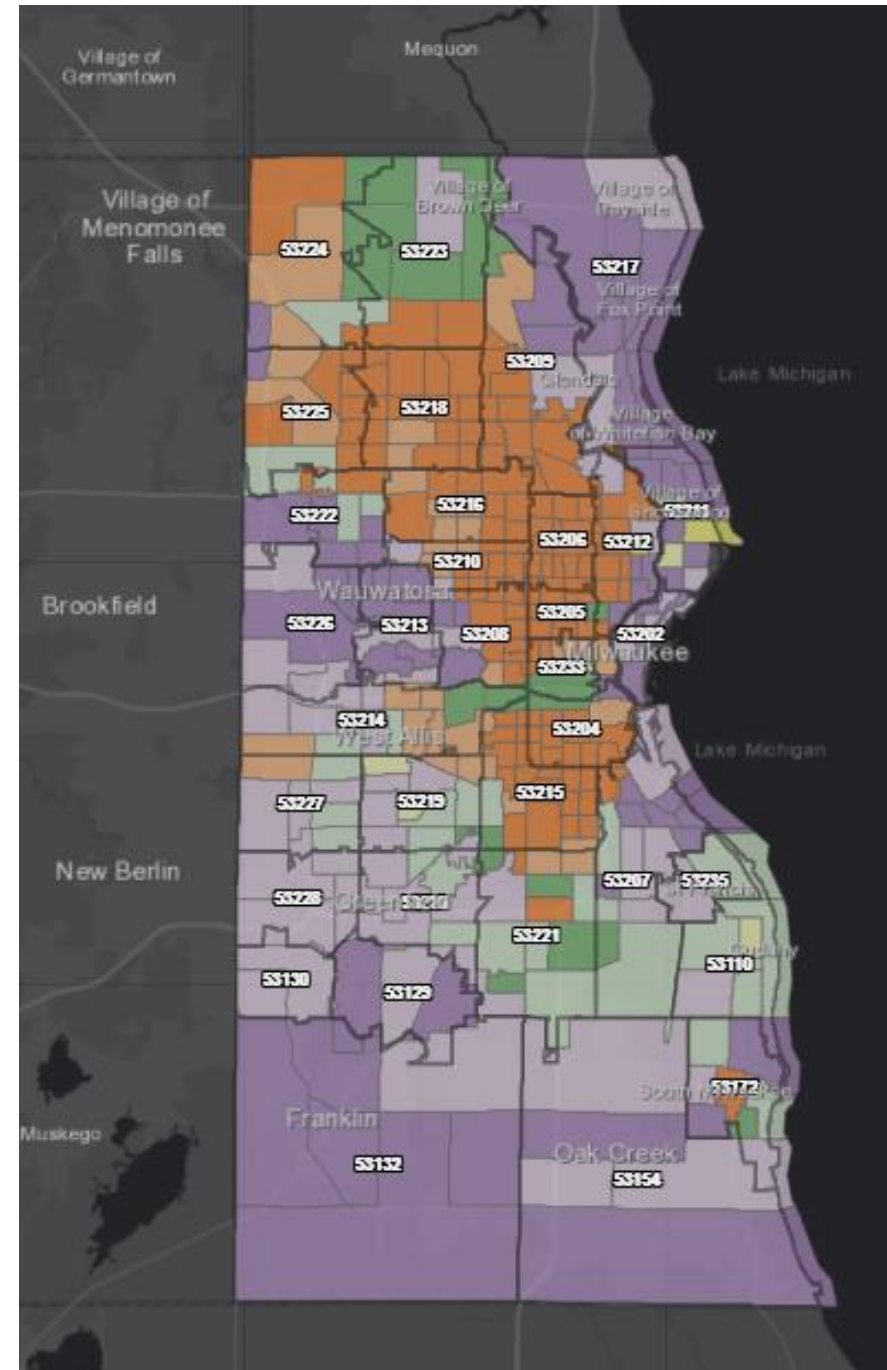
- People with health conditions that put them at risk for hospitalization and death from COVID-19

EVE Map

37% coverage



2% coverage



Demand still outstrips supply and supply is improving

Week #	Delivery Week	First Doses Allocated	First Doses Requested	Providers Requesting	Providers Receiving
10	Feb 15	70,625	337,821	555	434
11	Feb 22	125,006	342,228	555	345
12	March 1	126,460	415,447	676	478
13	March 8	137,964	427,656	635	586
14	March 15	179,245	450,703	617	706

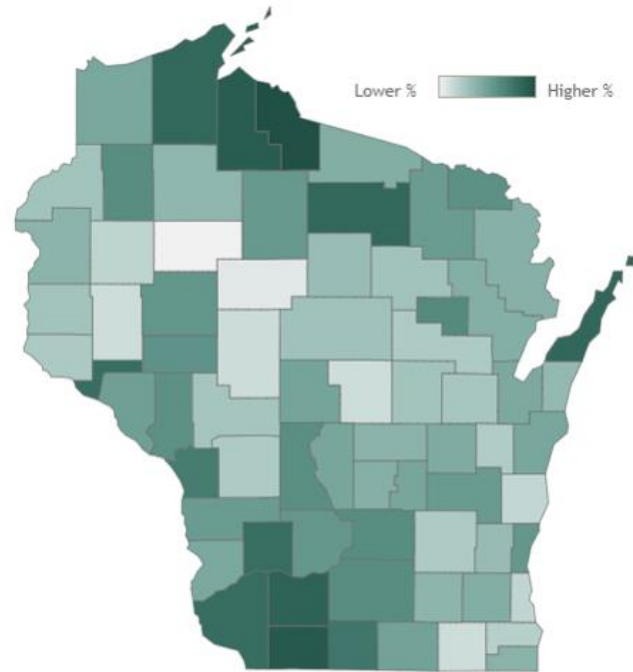
Allocation model

- As many providers as possible get some vaccine
- Model components
 - Federally Qualified Health Centers, Tribal, and Free Clinics receive 100% of request (since 2/1)
 - All Local Health Departments receive a minimum (since 2/8)
 - # of vaccines for each county is determined using social vulnerability index, population minimums and maximums (as of 2/1) and geographic equity reallocations (as of 2/22)
 - Each vaccinator's allotment is calculated based on their request and the available vaccine for their county
 - Additional bump in vaccine to organizations vaccinating higher percentages of racial and ethnic groups (as of 3/15)

Improving geographic equity

Wisconsin residents who have received at least one dose by county

Click a county to filter data

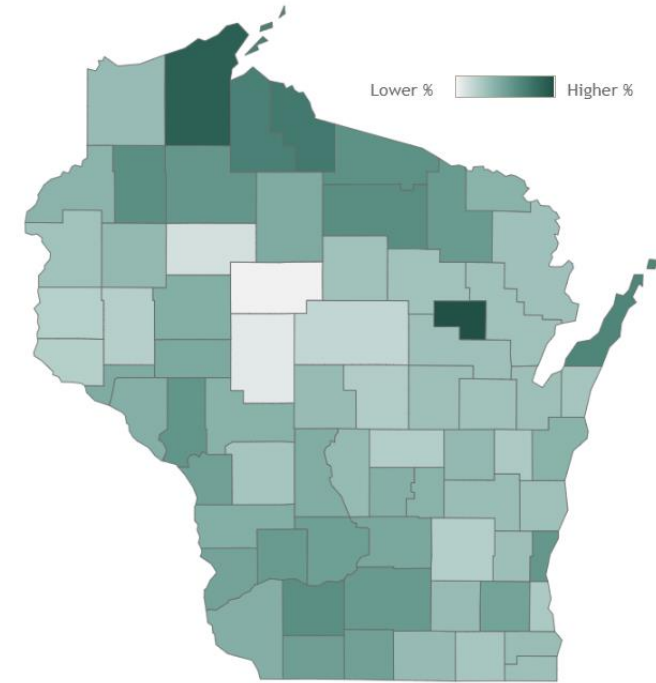


Vaccine doses administered to Wisconsin residents each week
(Total: 845,646)

February 11, 2021

Wisconsin residents who have received at least one dose by county

Click a county to filter data



Vaccine doses for Wisconsin residents by week
(Total: 1,999,314)

March 16, 2021

Resource Allocation

- Grant funding to local organizations to support outreach, trust building, information sharing, enhancing vaccine access
 - Grant applications due March 19; Funds awarded by March 31
- Enhancing existing contracts with organizations serving populations in areas of high social vulnerability (e.g. FQHCs, ADRCs)
- Mobile vaccination teams to increase capacity of local vaccinators
- Providing state or federal support for large community vaccination sites so that local staff can focus on mobile and neighborhood outreach and strategies

DISCUSSION