

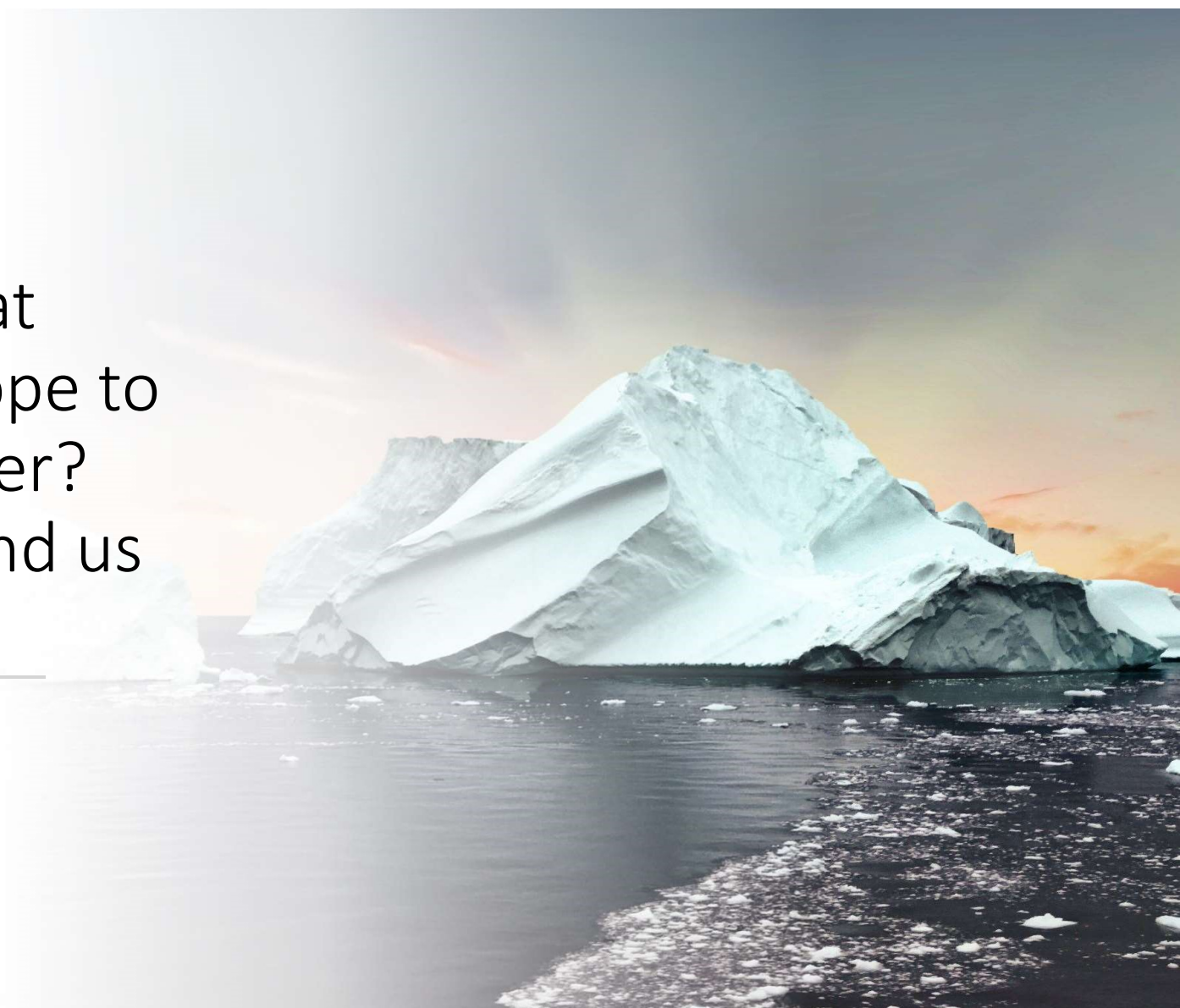
Data, Analytics, and Strategy Subcommittee

July 21, 2021

/

Our time today





Ice Breaker: What activity do you hope to do yet this summer? (please also remind us who you are😊)

Overview of the Data, Analytics, and Strategy Subcommittee

GHEC Subcommittees



Representation/Decision-making/Power/Access (POWER)



Structural Funding Inequities (POLICY)



Investment in Targeted Programming for Under-Resourced Communities (PROGRAMS)



Data, Analytics and Strategy (FRAMING)

FRAMING: Data, Analytics and Strategy

Co-Chairs: Shiva Bidar & Paula Tran

Facilitators: Sarah Schuit, DCF & Andrew Walsh, DHS; **Planning Committee Lead:** Michelle

GOAL: Develop recommendations aimed at targeting gaps in our understanding of health inequity and/or limits to accountability, and lead the development of the data narrative, **framing** of the work and strategy for driving plan buy-in.

Examples:

- Investigate health inequity across race and ethnicity, incarceration, economic status, and geography (EO #17)
- Identify other focus areas and communities



Data, Analytics and Strategy Subcommittee Central Workflow

1

Pull together data from existing sources related to focal topics.

2

Package information for subcommittees use.

3

Identify gaps in data and make recommendations based.

4

Work on developing narrative and framing of the data.

- Advise on strategy for getting widespread buy-in of the plan.

5

Review recommendations from subcommittees.

What would success look like to...

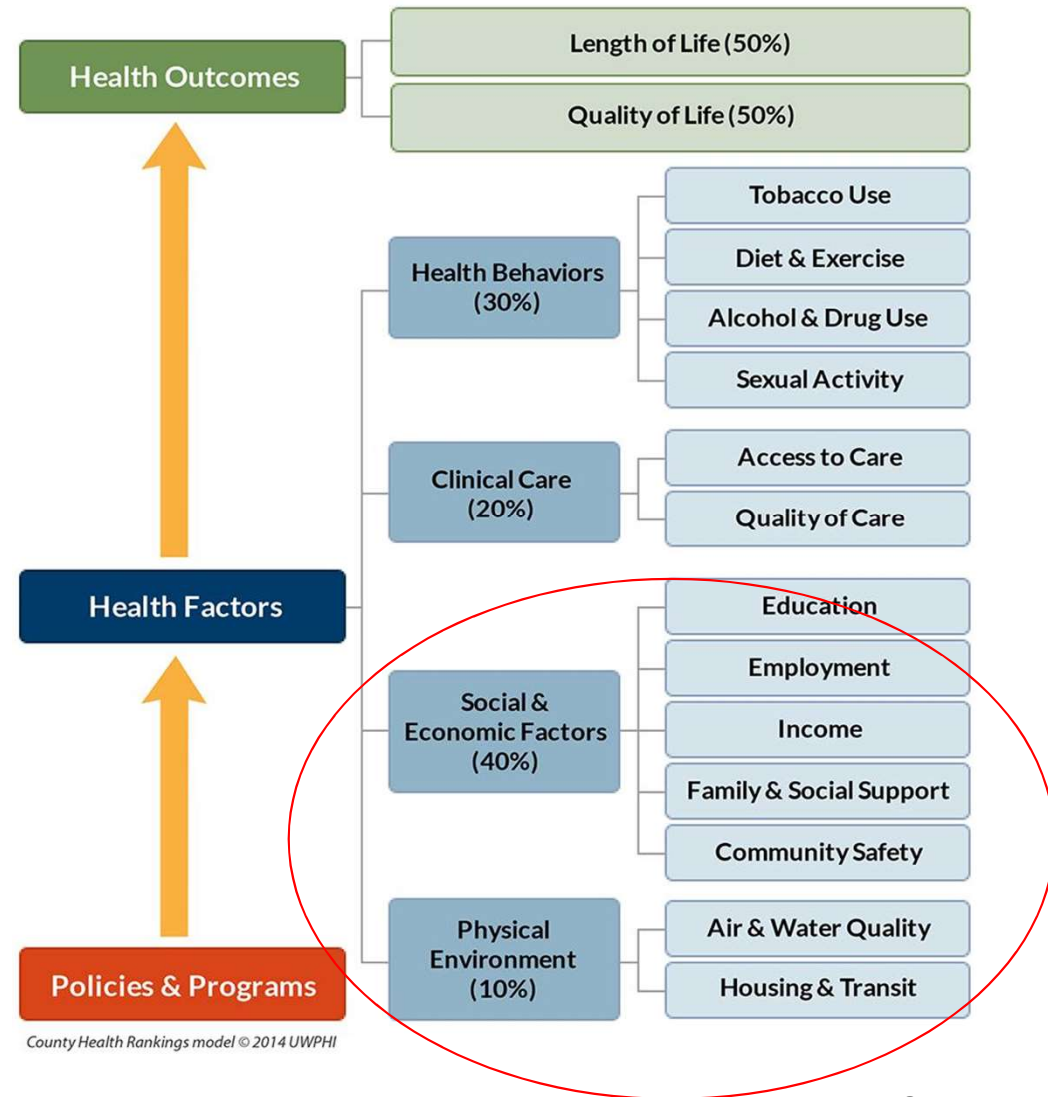
Guide Overarching Strategy and Advance a Health Equity Narrative?

- Determine guiding strategy to address root causes of health (in)equity
 - Determine gaps in data and make recommendations around data needs
 - Inform the work of other GHEC Subcommittees
- Move a narrative that engages champions that broadly represent those impacted by inequity and a diverse range of changemakers
 - Build public will
- Where to start: County Health Rankings & Roadmaps and State Health Improvement Plan ...

Social Determinants of Health

The conditions in which people are born, grow, live, work and age, including the health system.

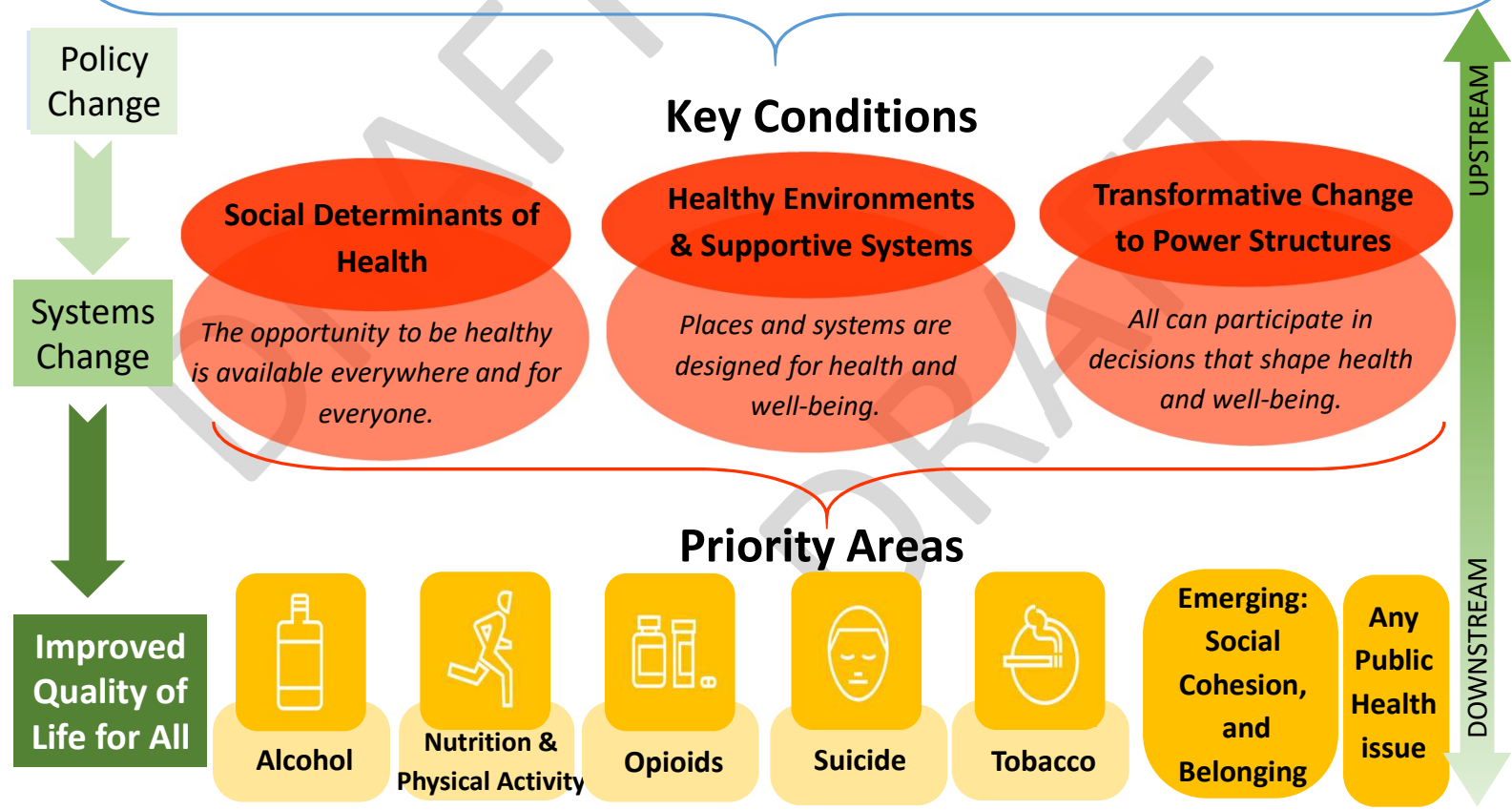
These circumstances are shaped by distributions of power which drive allocations of dollars and resources at global, national and local levels.



Reframing the State Health Improvement Plan

Priority Goal: Everyone has a fair and just opportunity to live their best life.

Action: Align partners, narrative, and statewide investments to support advancing Key Conditions



Values & Principles: *Accountability Empowering Community Voices Justice Valuing Community Assets*

Reframing the State Health Improvement Plan

Priority Goal: Everyone has a fair and just opportunity to live their best life.

Values and Principles

Justice

Community voices

Collaboration

Sustainability

Accountability

Key Conditions

Social Determinants of Health

The opportunity to be healthy is available everywhere and for everyone.

Healthy Environments & Supportive Systems

Places and systems are designed for health and well-being.

Transformative Change to Power Structures

All can participate in decisions that shape health and well-being.

Priority Areas



Alcohol



Nutrition &
Physical
Activity



Opioids



Suicide



Tobacco

*Emerging:
Social Connectedness
& Belonging*

*Any Public
Health issue*

POLICY CHANGE

UPSTREAM

DOWNSTREAM

Reframing the State Health Improvement Plan



Reframing the State Health Improvement Plan



Logistics and Next Steps

- Logistics
 - Proposal: Meet monthly on the second Wednesday of the month from 3-4 pm, Starting Aug 11
- Next Steps