

Performance Improvement Committee

Statewide Trauma Advisory Council
Wednesday, September 6, 2023

Acronyms

- EMSC: Emergency Medical Services for Children
- WTCS: Wisconsin Trauma Care System

Agenda

- Introductions and announcements
- Review and approve June 2023 meeting minutes
- Pediatric dashboard review
- Pediatric imaging guideline data metrics presentation by American Family Children's Hospital, Children's Wisconsin, and Marshfield Medical Center
- EMSC: What it means to be pediatric ready?
- Public comment related to performance improvement of the WTCS

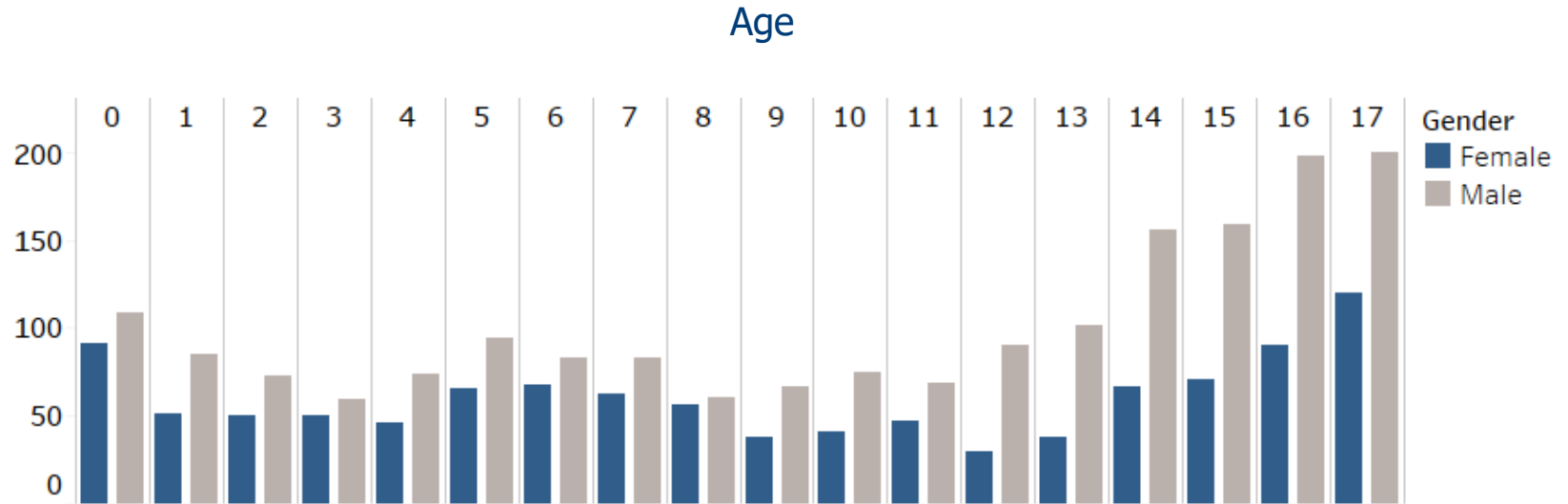
Committee Members

- **Chair:** Thomas Bergmann, Aurora BayCare Hospital, Region 3, Level II
- **Vice Chair:** Kristin Braun, Children's Wisconsin, Region 7, Level I
- Committee Members:
 - ◆ **Ali Heiman**, Aurora Oshkosh, Region 6, Level III
 - ◆ **Tracy Schaetzl**, UnityPoint Health Meriter, Region 5, Level IV
 - ◆ **Thomas Ellison**, UW Health, Region 5, Level I

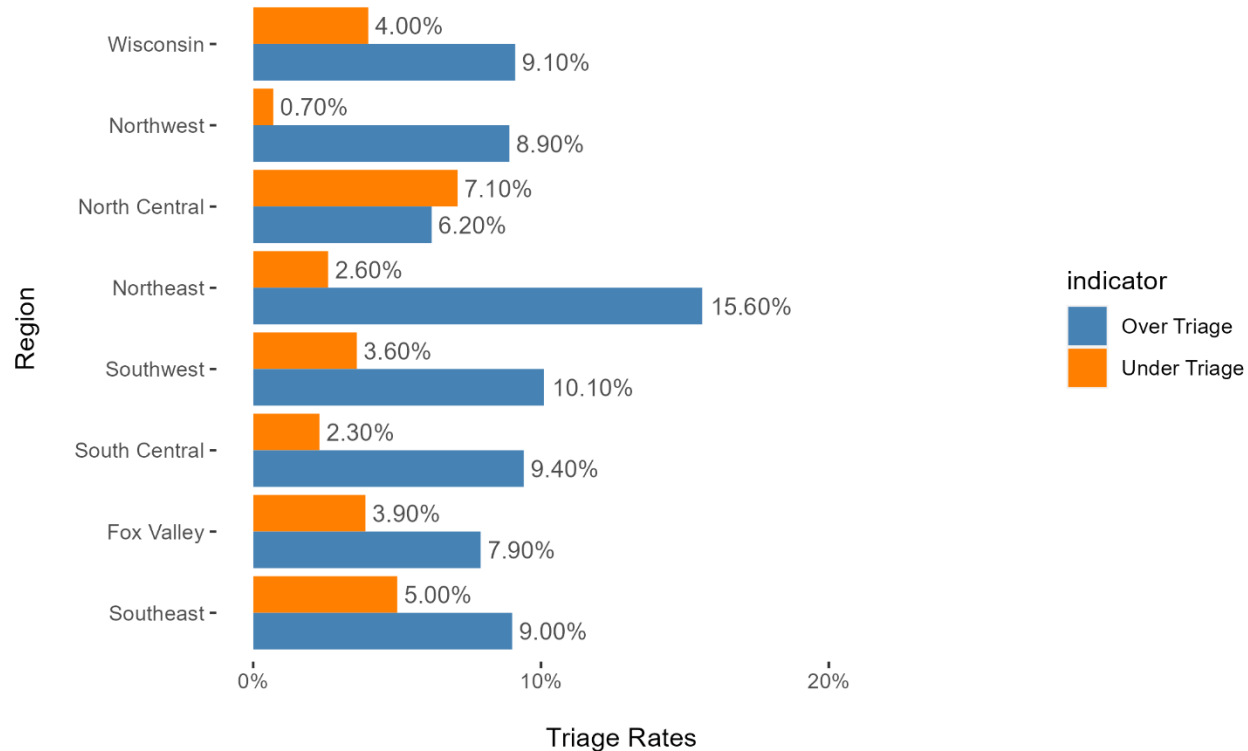
Approval of Minutes

2022 Pediatric Dashboard

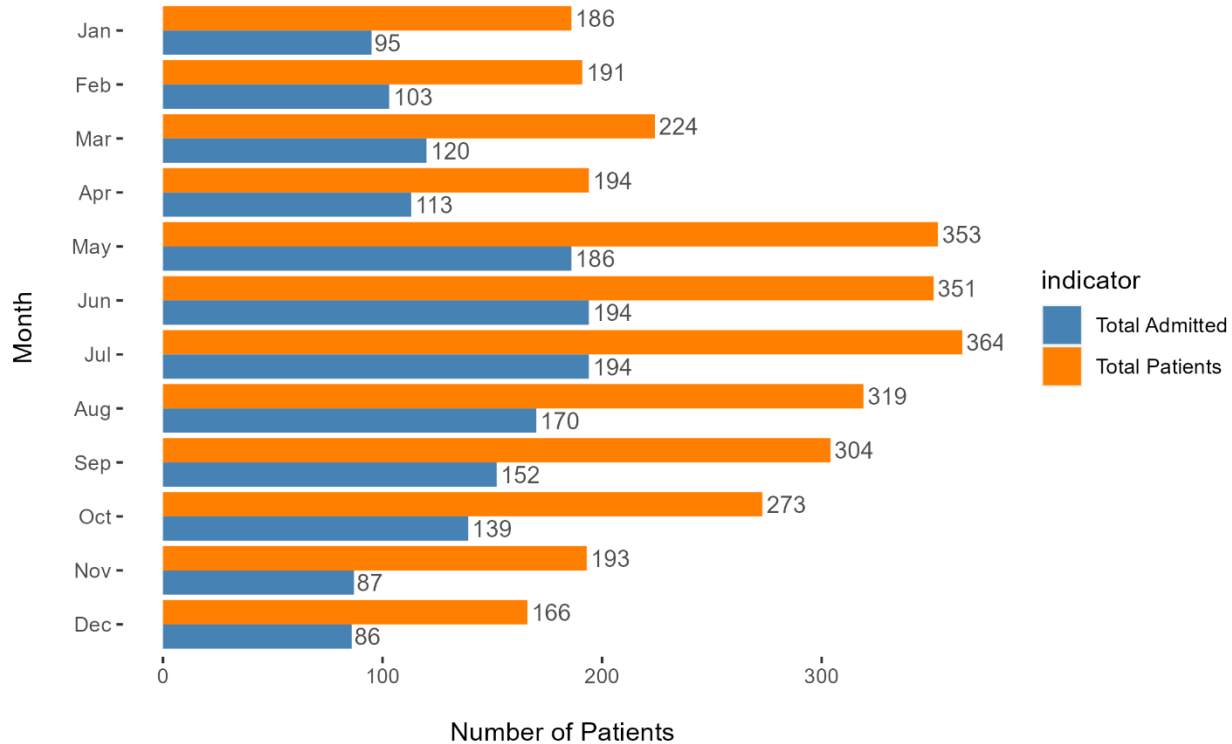
Pediatric injuries by age and gender



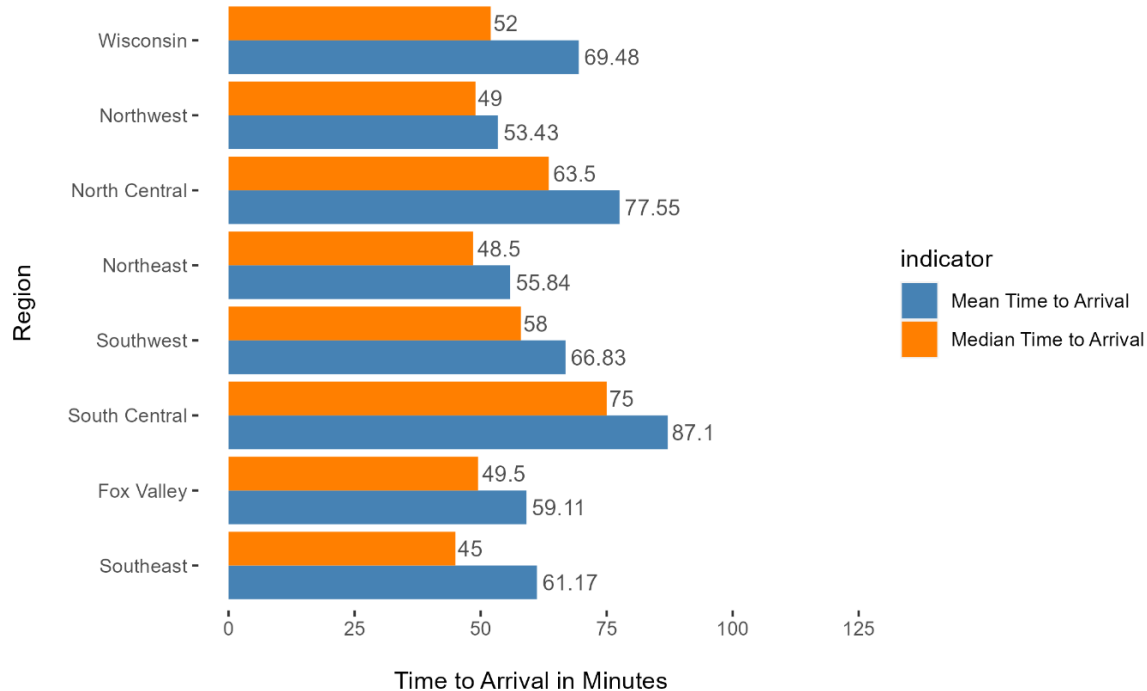
Pediatric over and under triage by region



Pediatric trauma patients and admissions by month

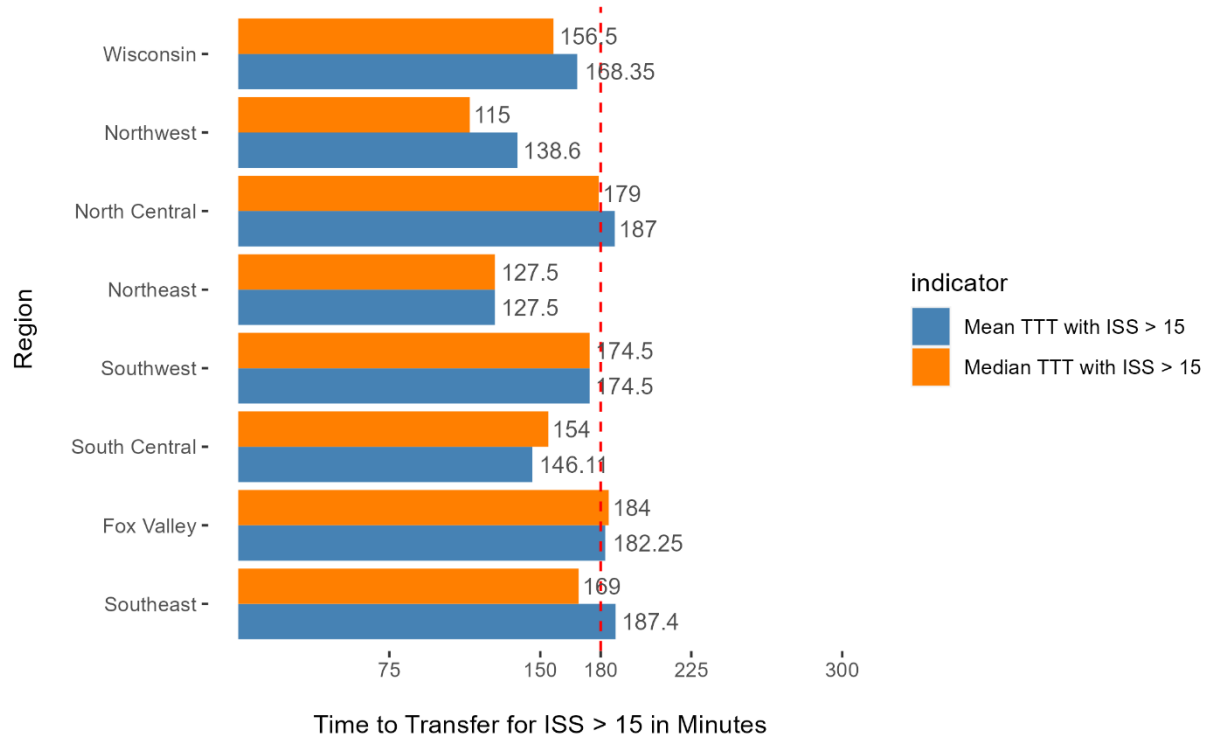


Time to arrival for pediatric incidents

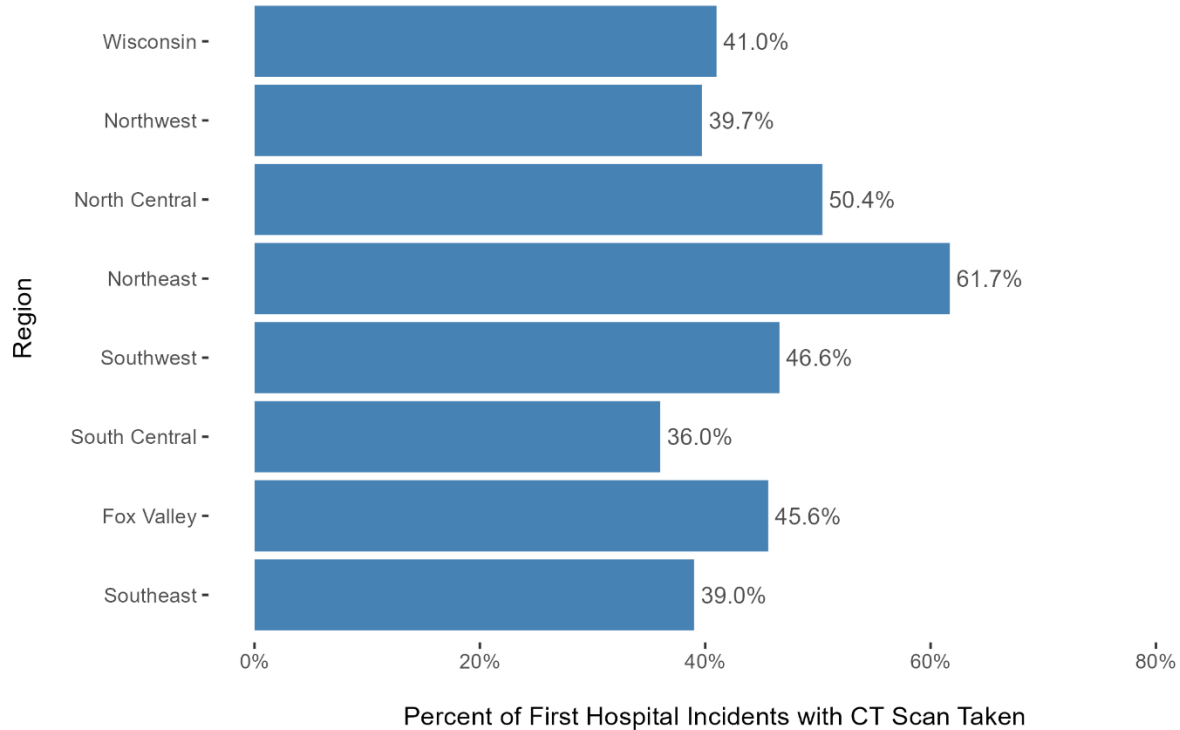


Note: Time to arrival = EMS notified to ED admission

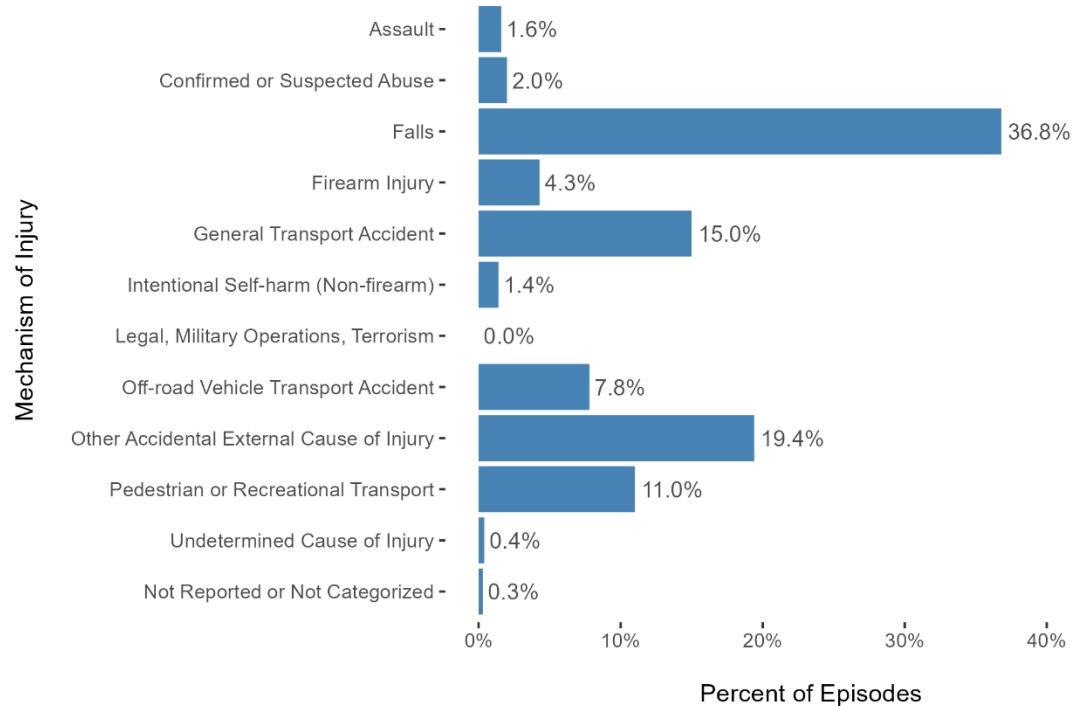
Time to transfer by region for pediatric incidents where ISS > 15



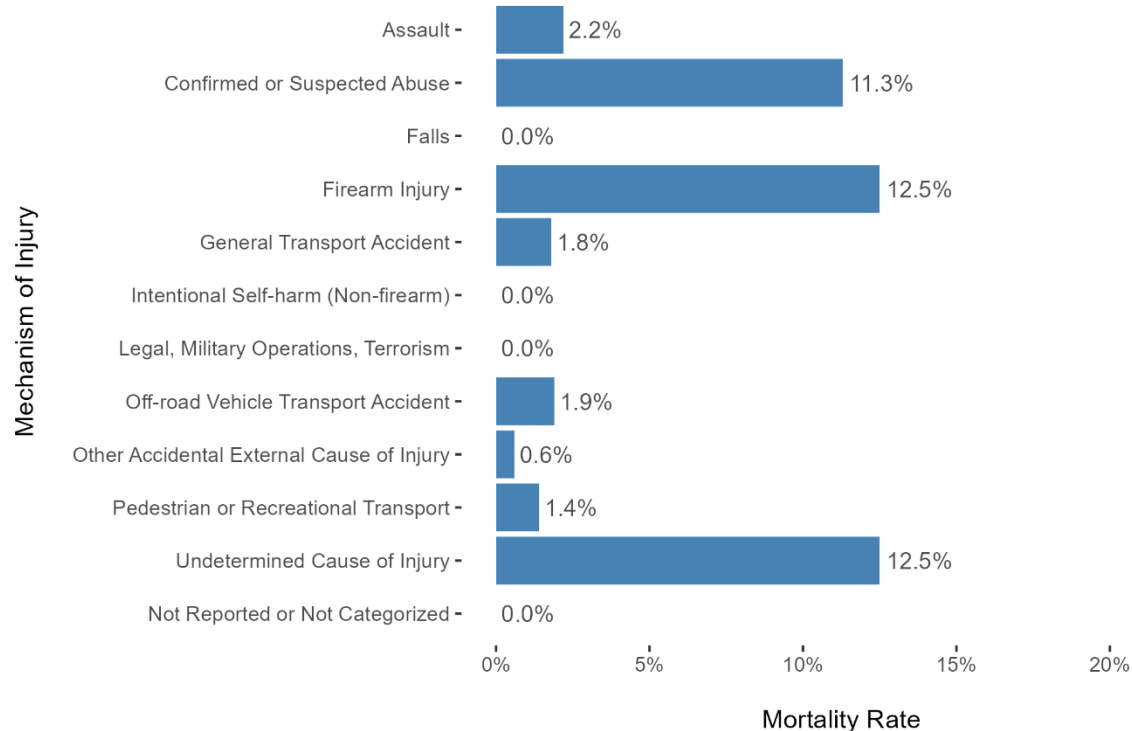
Percent of pediatric incidents where a CT scan was taken at the first hospital a patient visited



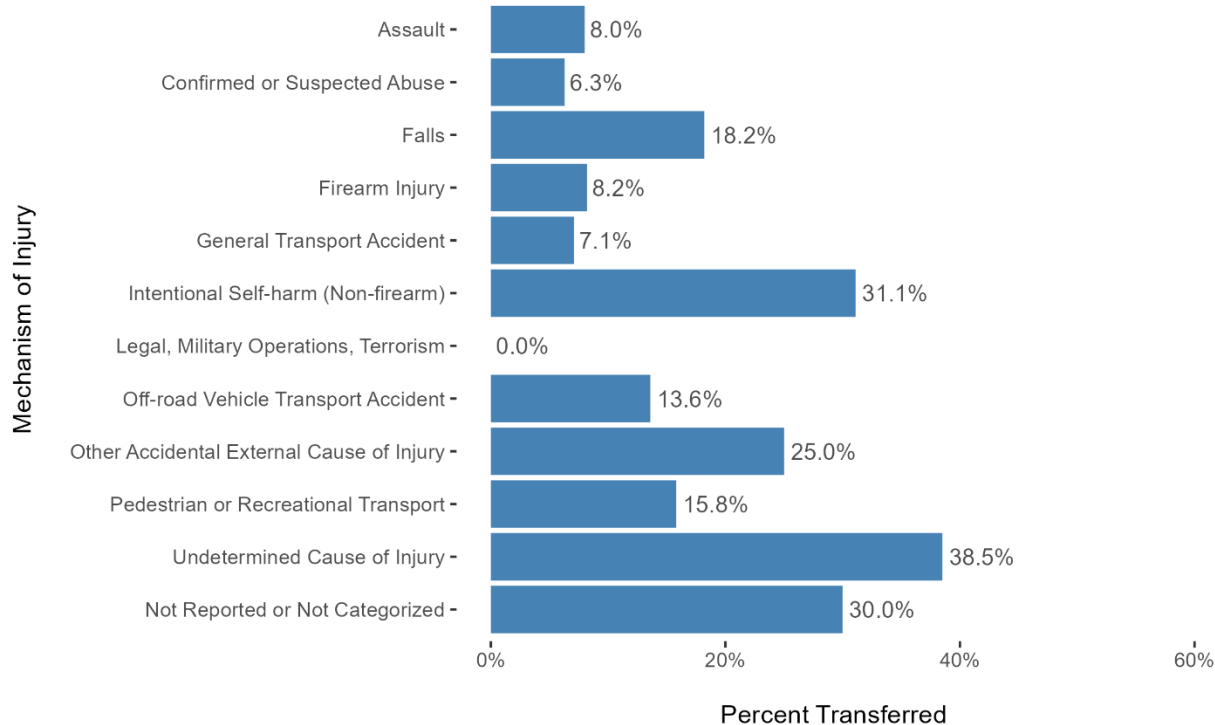
Pediatric mechanisms of injury



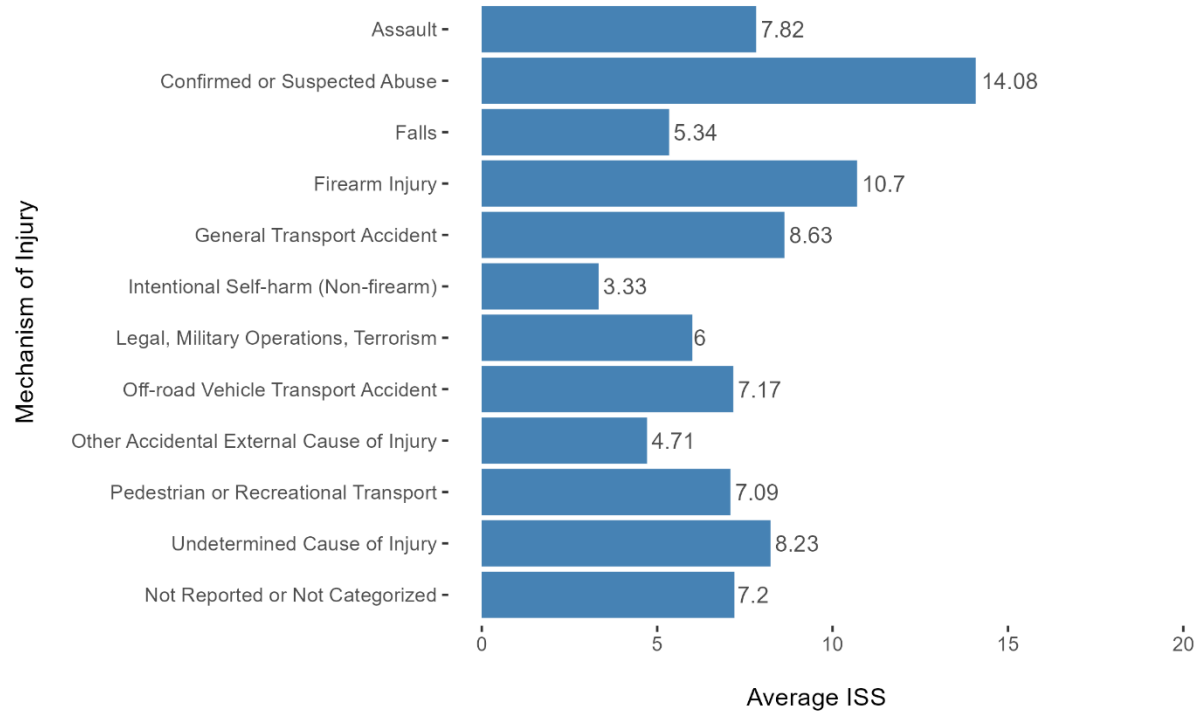
Pediatric injury mortality rate by mechanism of injury



Percent of pediatric patients transferred by mechanism of injury



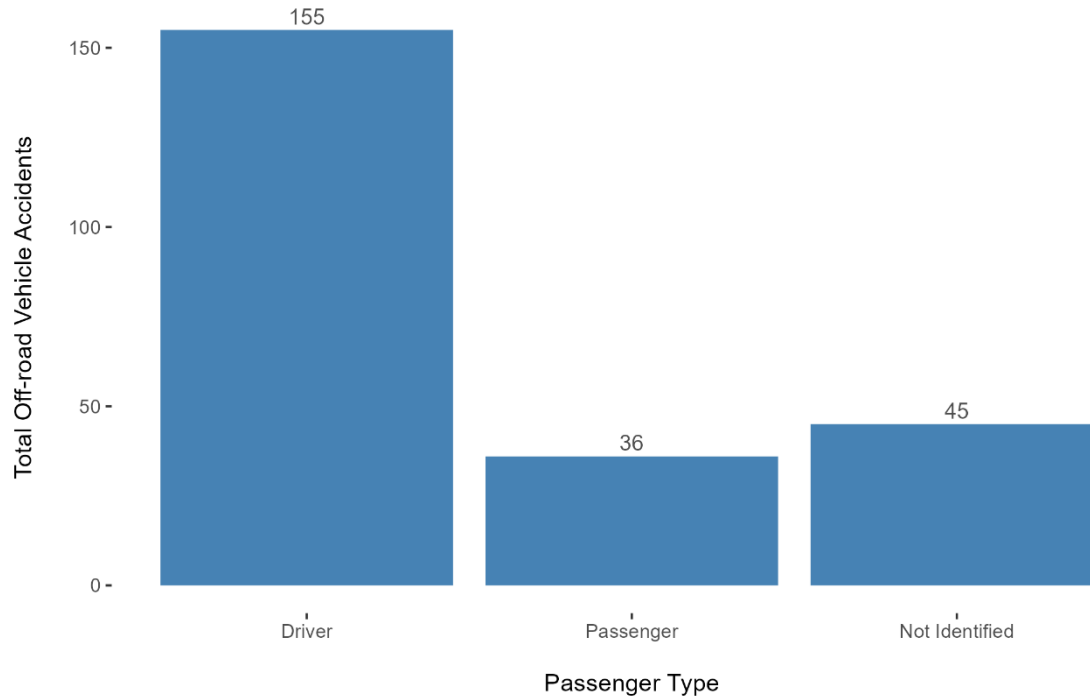
Average ISS by mechanism of injury for pediatric injuries



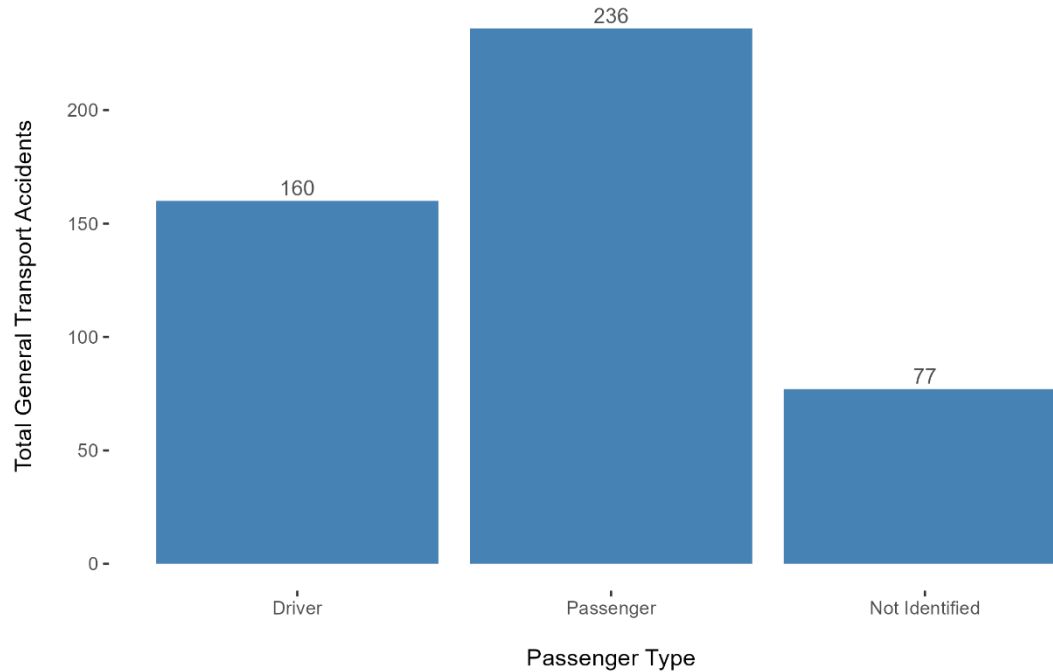
Pediatric falls breakdown by age and type of fall

Fall Type	0-4	5-9	10-14	15-17
Fall from same level	63	86	87	37
Fall from playground equipment	44	143	19	1
Other fall	67	68	21	11
Fall from furniture	90	37	7	2
Fall on stairs	69	16	12	10
Fall from height (ladder, window, etc)	22	29	12	12
Fall while being carried	43	3	1	1
Fall due to ice and snow			6	3
Fall in shower or tub	2		2	1
Fall into water or diving injury			2	3

Pediatric off-road vehicle injuries



Pediatric general vehicle injuries



Pediatric Imaging Guideline Data
Metrics Presentation by
American Family Children's
Hospital, Children's Wisconsin,
and Marshfield Medical Center

EMSC: What does it mean to be pediatric ready?

Questions?